



THE BRYSON

OF CHATSWOOD

Goldfields

A photograph of a sky filled with soft, golden clouds, likely during sunset or sunrise. The clouds are illuminated from the side, creating a warm, glowing effect. The sky transitions from a pale blue on the left to a soft orange and yellow on the right.

**AN INTIMATE
RETREAT
IN THE SKY**

Endless open views,
surrounded by space
and light.



Artist impression

A new architectural
dawn for Chatswood.

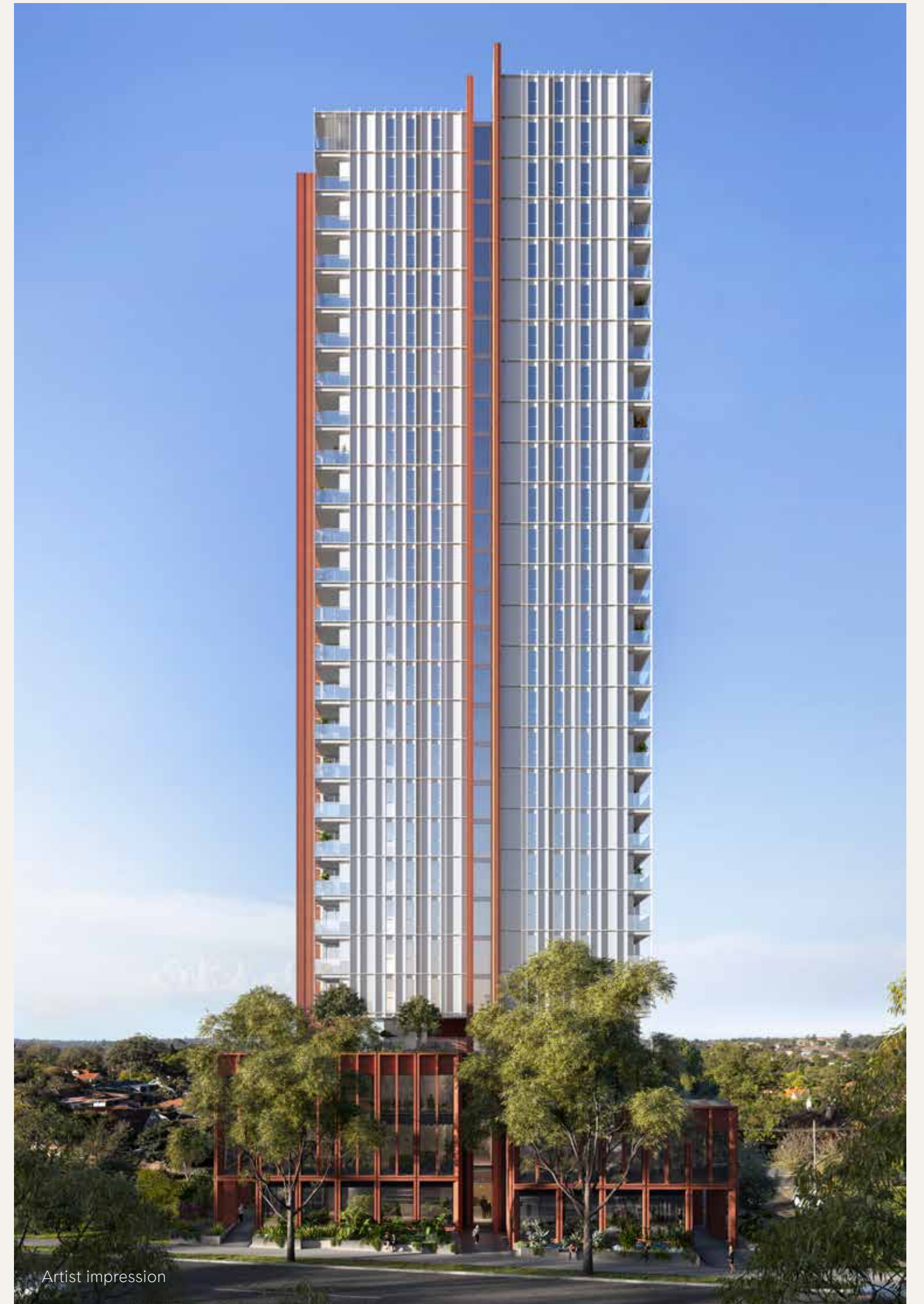


Artist impression

A collection of residences for those who value a private lifestyle.

The Bryson of Chatswood perfectly balances city living and escapism through thoughtful design, an articulation of expansive views, and daily remedy. Cultivating the atmosphere of an urban resort, and drawing on Sydney's established narrative a collection of intuitive, sophisticated apartments has been realised to support contemporary living.

Gently evolving Chatswood's city skyline, The Bryson embraces its context with a design language inspired by both the industrial ambience and urban vibrancy of its streetscape, tempering both through an architectural response that emphasises timeless design and a seamless connection to the surrounding locale.



Artist impression





Inspired by the interplay between industry and the natural environment.

Designed by Make Architects, The Bryson encapsulates the spirit and diversity of Chatswood through its striking vertical form and fusion of refined glass and steel complimented by earthy and industrial characteristics.

Exuding strength and elegant modernity, the building employs a distinctive terracotta blade form which echoes the historic brickmaking narrative of the area while counterbalancing the contemporary architecture of the building's bulk.

The outcome is a striking beacon within the cityscape, softened by landscaping to activate the rich tapestry of its built and native surroundings.





Artist impression

A considered approach to design.

Light, spatial generosity, and intuitive design act as markers of distinction within residences that mediate between a curation of design elements and the possibility for residents to introduce their own personal expressions.

Maximising connections to nature, expansive glazing and generous private outdoor terraces coax natural light and encourage cross ventilation into the heart of the home.

Through a singular approach to design, an emphasis on the structural blade becomes an interior feature, introducing a visual language which balances otherwise tactile layers of materials. Fixtures and finishes are defined by quality and minimalism, letting nature and expansive views take centre stage.

Accentuating bountiful natural light.

Defined by open plan layouts and elegantly textural materials such as warm timber and stone, living and kitchen spaces take maximum advantage of natural light.



Artist Impression





Artist Impression



Artist impression

EMBRACE THE AIR



Artist impression

A serene home in the sky.

With seamless navigation between inside and out, the collection of skyhomes and penthouse residences set a new benchmark for luxury urban living.

Walls of operable glazing define thresholds between expansive open plan living spaces and generous balconies.

While privacy is retained through orientation and the intentional inseting of balconies, panoramic views instill a sense of belonging to the greater community of Chatswood.



Artist impression



Artist impression

NEXT LEVEL ESCAPISM



Harnessing the atmosphere of an urban haven.

With a focus on wellbeing, nature is a constant thread through the fabric of the buildings shared spaces, offering verdant garden zones, earthy tones, fresh air and natural light throughout a considered selection of resident amenities.

Each amenity has been designed for flexibility of use and relevance to contemporary lifestyles where quiet reflection and time and space with family and friends find equilibrium.



Artist impression





Artist impression

Your private, verdant oasis.

Situated to take in sweeping views across the surrounding Chatswood CBD, the pool terrace is a verdant oasis where a quiet morning swim or an evening with friends is backlit by sun and a sparkling nighttime cityscape.

Balancing both form and function, the terrace features intelligent greenery for screening and beauty as well as outdoor furniture perfectly aligned for a private read in the shade or considerate social dynamism.



Soaked in both sun and cultivated shade by day, the city terrace is a flexible space equally suited to quiet personal downtime and moments of togetherness with friends and family. Outdoor furniture, BBQ facilities and lush arrangements of plants create social zones while bringing natural beauty to draw residents and visitors alike.

TIME TO BE



TOGETHER



Artist impression



Artist impression

FLEXIBLE SPACES



Artist impression

An enduring sense of place.

Integrating seamlessly into the vibrant public realm of Chatswood is a ground floor retail offering that acts as a threshold between the neighbourhood and the private residences above. Creating a further level of diversity are strata office suites throughout levels 2 and 3. Centred around the live, work and play philosophy, The Bryson harnesses a distinctive character and an enduring sense of place.



NATURE & CULTURE

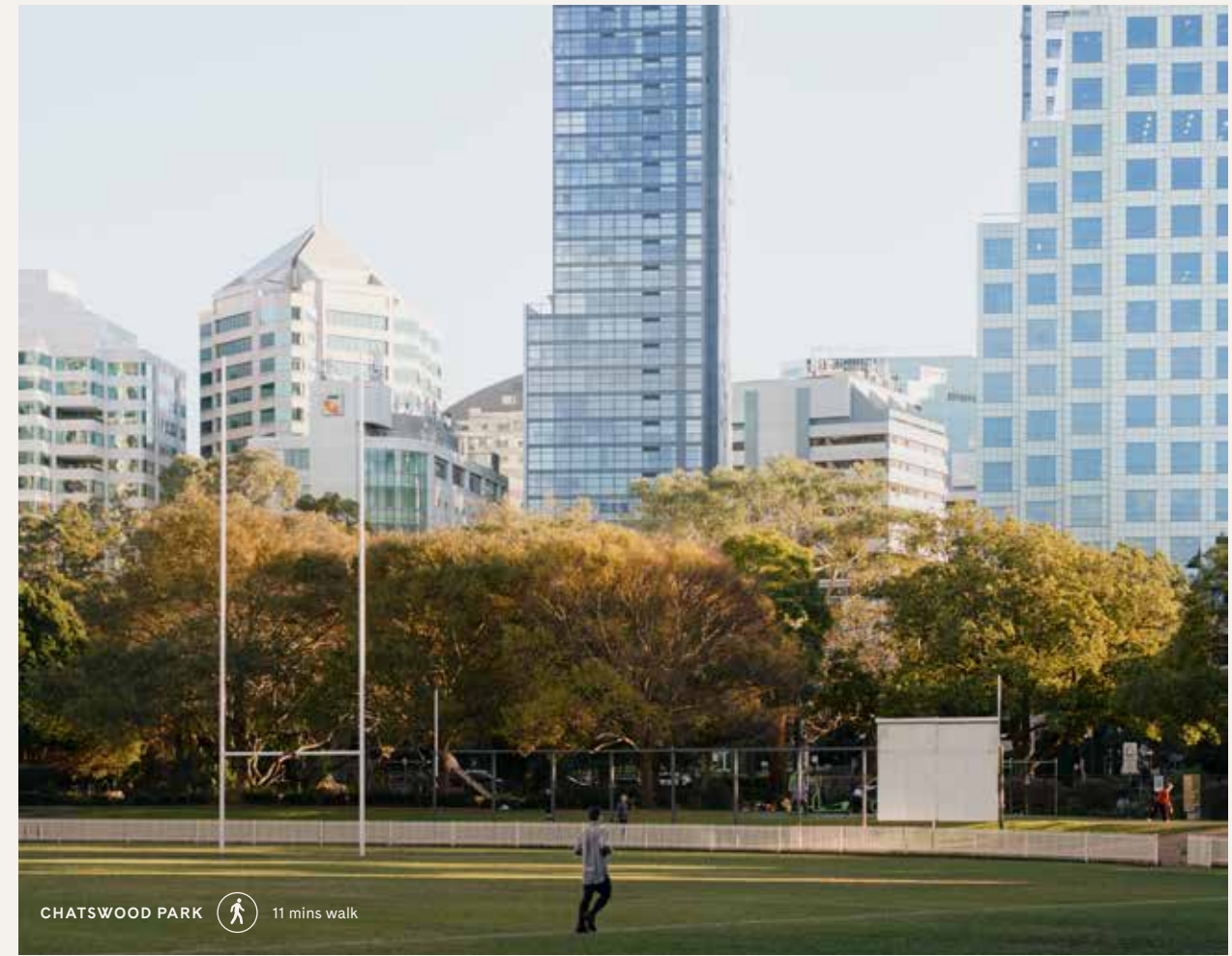


Chatswood – a rich diversity of cultures, cuisines and community.

Recognised as one of Sydney's most desirable inner urban suburbs due to its hyper connectivity to Sydney's CBD and established community pockets, Chatswood continues to evolve towards a sophisticated and innovative transformation.



Immersed in a walkable, connected locale.





DISTINCTLY



An alchemy of cultures, stories, flavours, people and places.

Chatswood is a mecca of multi-faceted appeal. The area has several quality schools, seamless connection to major arterials and transport exchanges and nurtures a thriving commercial landscape to position it as a suburb of convenience and ample future opportunity.

DIVERSE



FLOWERCHILD 12 mins walk



KURO TAKURA JAPANESE BBQ 16 mins walk



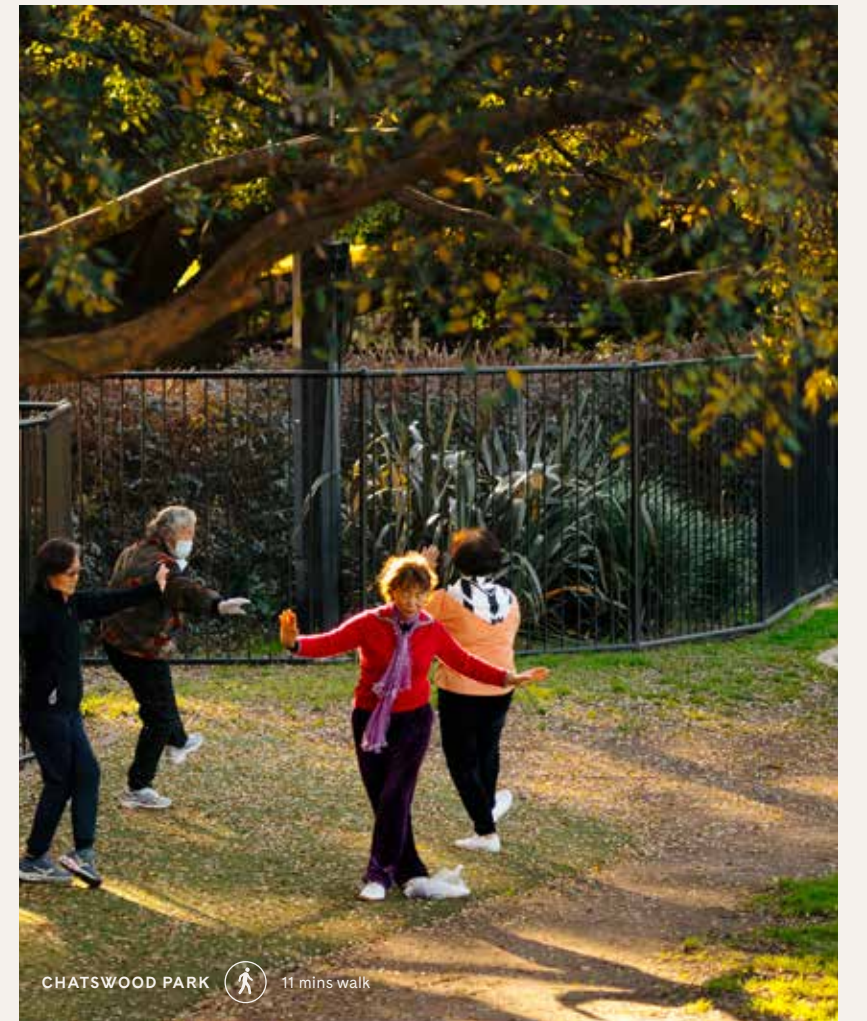
LEMON GROVE 8 mins walk



SHUK CHATSWOOD 15 mins walk



FLOWERCHILD 12 mins walk



CHATSWOOD PARK 11 mins walk

A highly convenient North Shore suburb teeming with quality dining, shopping and educational opportunities.

RESTAURANTS & BARS

- 1 Mama Mulan
- 2 Amah by Ho Jiak
- 3 Senpai Ramen
- 4 Kuro-Sakura BBQ
- 5 Khao Pla
- 6 Din Tai Fung
- 7 465 The Avenue
- 8 Bavarian Bier Cafe
- 9 The Willoughby Hotel

CAFES

- 15 Flowerchild
- 16 Shuk Chatswood
- 17 Toastiesmith
- 18 SML Cafe
- 19 Tea Journal
- 20 Amie Coffee
- 21 Steam Engine Coffee
- 22 Elbow Room Espresso
- 23 Gram Cafe Chatswood

PARKS & RECREATION

- 10 Chatswood Park
- 11 Beauchamp Park
- 12 Bales Park
- 13 Muston Park
- 14 Blue Gum Reserve

ARTS & CULTURE

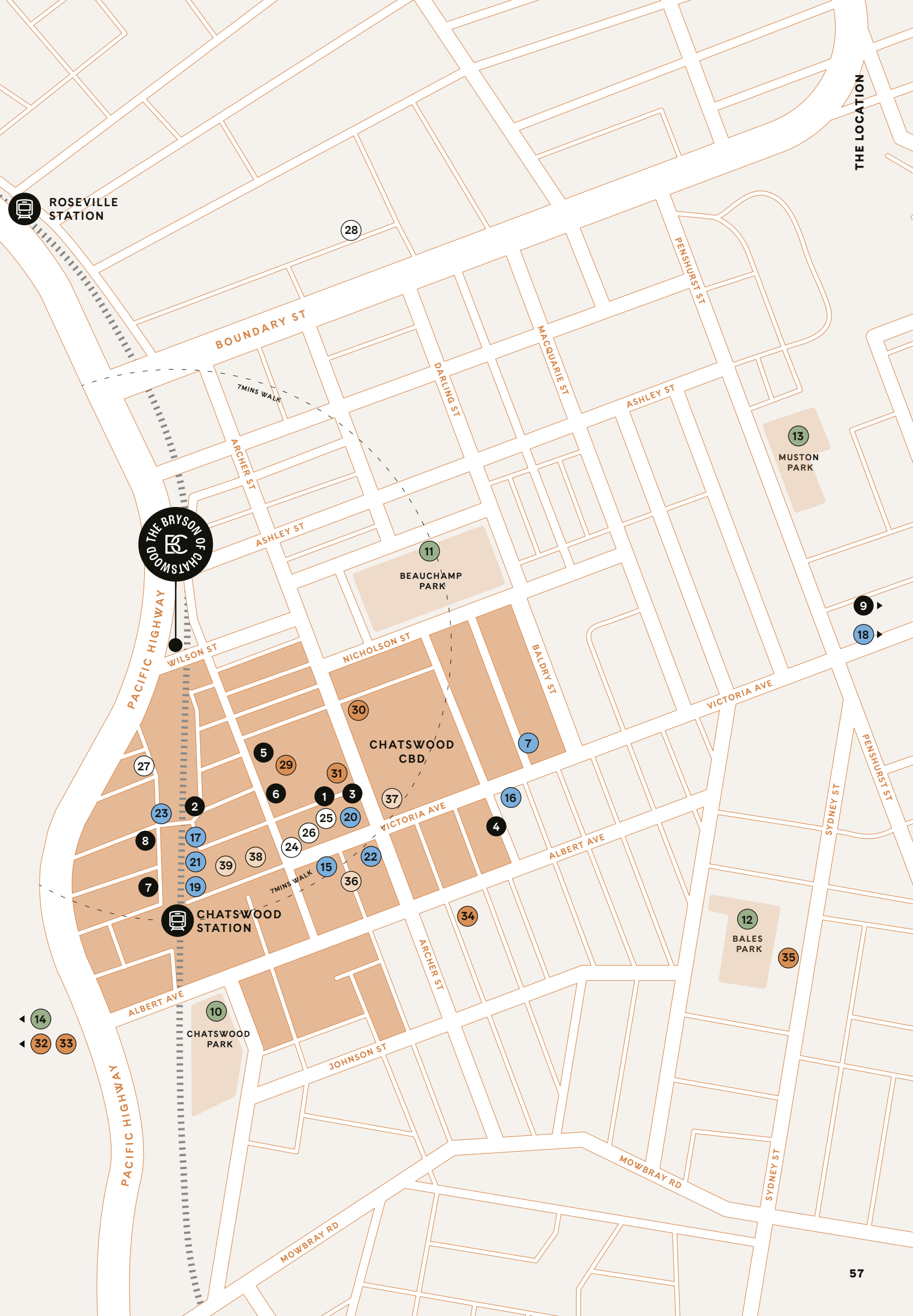
- 24 The Concourse
- 25 Chatswood Library
- 26 Artspace
- 27 Zenith Theatre
- 28 Ku-ring-gai Art Centre

EDUCATION

- 29 St Pius X College
- 30 Mercy Catholic College
- 31 Our Lady of Dolours Primary School
- 32 Chatswood High School
- 33 Chatswood Public School
- 34 Chatswood International Kindergarten
- 35 Glenaeon Rudolf Steiner Preschool

RETAIL

- 36 Westfield Chatswood
- 37 Chatswood Chase
- 38 Victoria Plaza
- 39 Lemon Grove Shopping Centre



Surrounded by a collection of parks and green space.

Surrounded by a collection of parks and green space, Chatswood's built environment is complemented by a verdant tapestry which weaves throughout its streets. Chatswood Park has held an integral place in the community for over a century and offers sports ovals, a skate park, walking and cycling tracks, an outdoor exercise station and playgrounds within sweeping lawns right in the heart of the commercial district.

Blue Gum Reserve in Chatswood West, and Ferndale Park are retained natural wonderlands where flourishing preserved bushland support natural ecosystems bringing an abiding sense of nature right into the urban milieu.







FLOWERCHILD 12 mins walk

A diverse and dynamic dining scene.

A diverse and dynamic dining scene has been long established in Chatswood which draws patrons from all over Sydney and beyond.

A strong Asian influence reflective of the people and cultures which reside in the area is supported by a wide variety of cafes, fine dining restaurants, tea houses and hotels which combine to instil a tantalising array of tastes from all around the world and a place to whet every appetite.



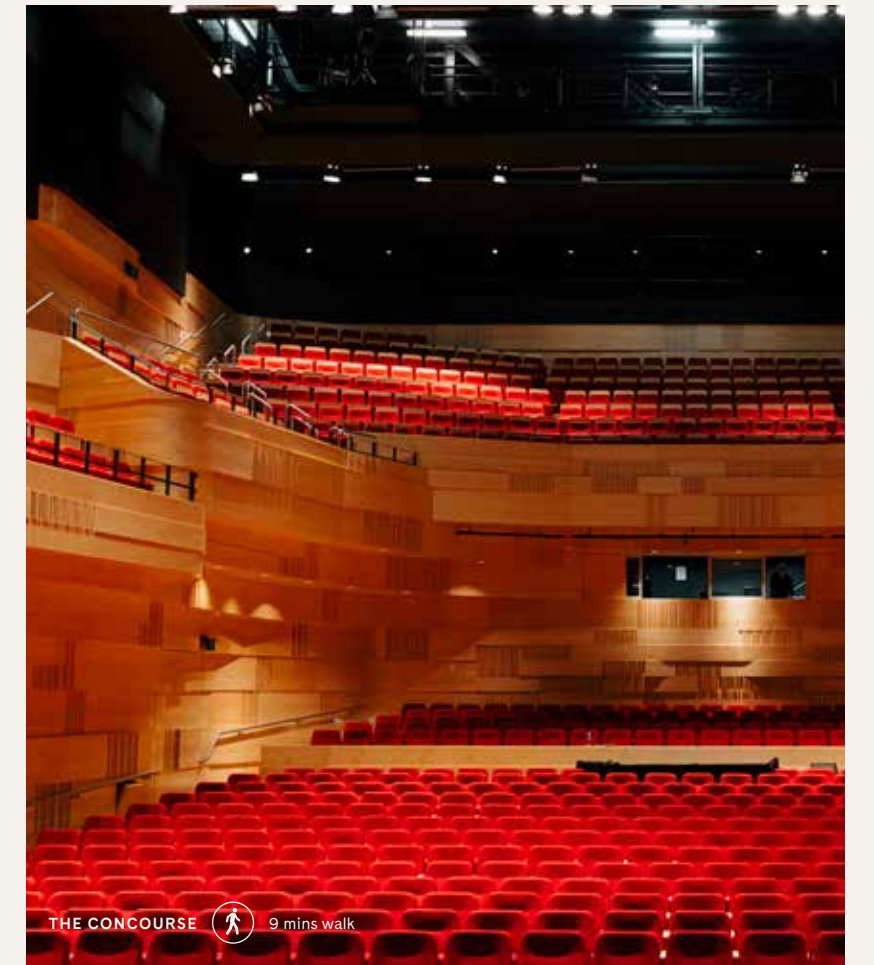
SHUK CHATSWOOD 15 mins walk



Chatswood's multiculturalism reflects in its dining culture. Whether Chinese, Japanese, Korean, Italian or Mediterranean, there are multitudes of options for incredible food experiences.



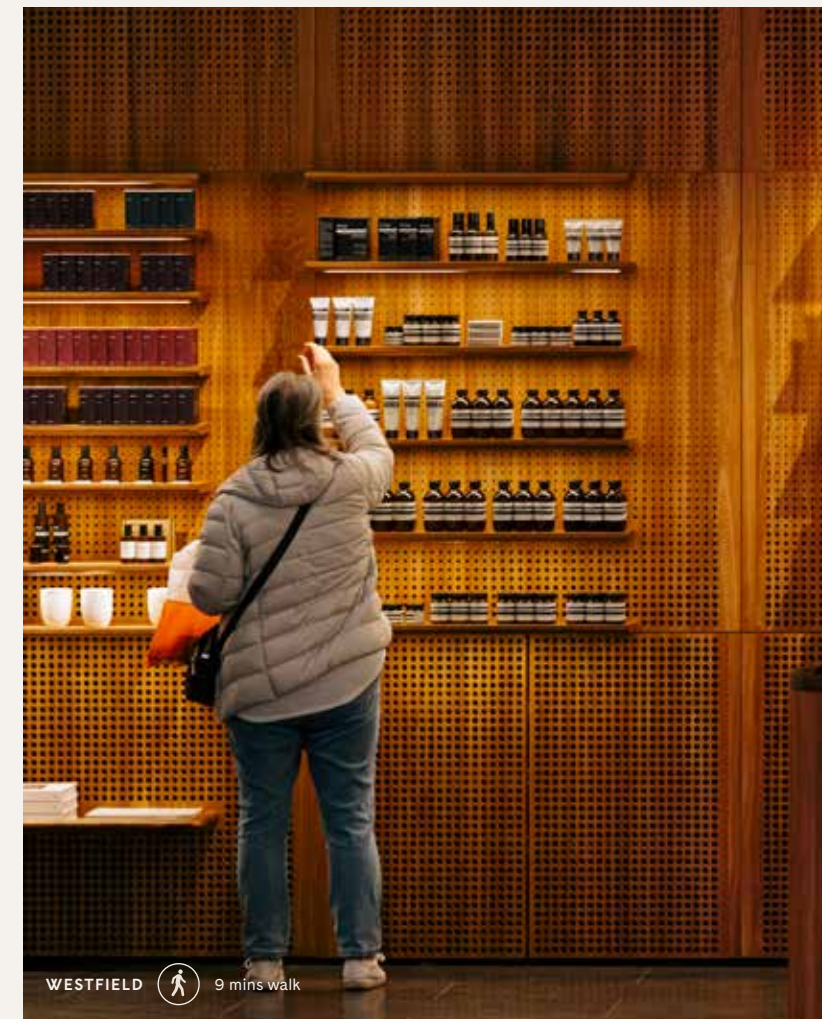




Bringing colour and life to Sydney's commercial map.

Thriving retail, arts and commerce chapters bring colour, life and balance to Chatswood's story extending the cultural dialogue to fulfil essential lifestyle factors. Two major retail hubs — Chatswood Chase Sydney and Westfield Chatswood — cement the area on Sydney's fashion map.

Complimenting these is an array of local and international brands represented throughout a number of retail precincts such as Victoria Avenue, a visible fostering of business culture through the provision of innovative commercial office spaces and a proudly developing cultural centre at The Concourse and Arts Space.







LOCAL TALENT

Meeting the people making Chatswood the vibrant city it is today.



THE PEOPLE OF CHATSWOOD

“There are so many great spaces in so many parts of Chatswood. So many great initiatives to get people out and about. Everyone loves a good crowd. It means something great is going on.”

ANNA PRICE
ARTIST



CHANG-YUN CHIANG
OWNER, BAO DAO

“I love the flow of
human population
through Chatswood.”

JO
ARTIST



“We thought Chatswood would be a really great location for an upper market restaurant. There are a lot of great cheap eats here so we thought we could bring something different.”

LOONG OON
OWNER & HEAD CHEF, AMAH



“It’s a mecca for shopping and eating while being one of the very few places in Sydney that you don’t need a car to get around.”

CHARISSA LAM
BUSINESS OWNER



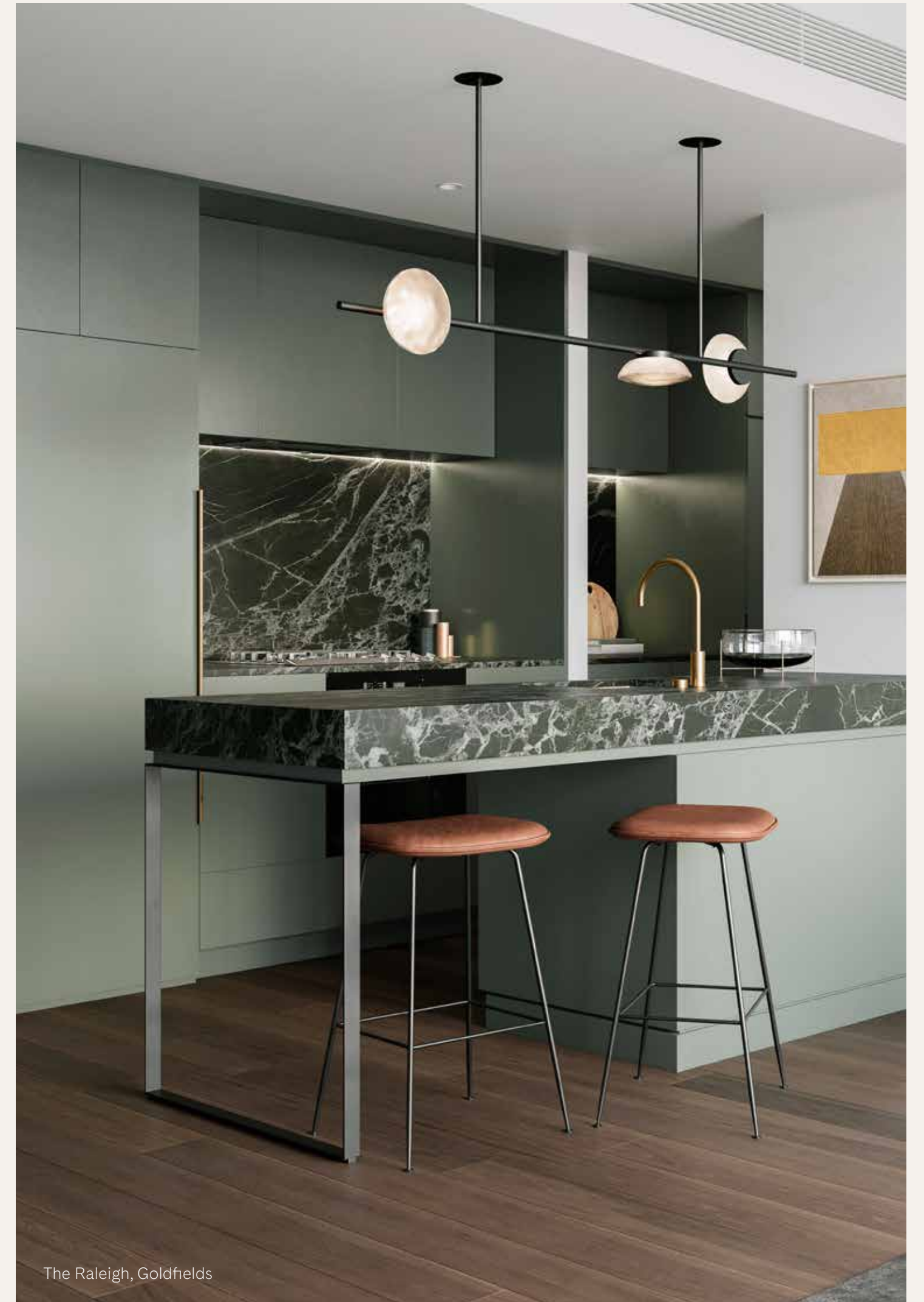
DEVELOPED BY

Goldfields

Goldfields is a progressive development group distinguished for its benchmark setting developments and performance in the industry.

The group's expertise spans multiple facets of property development including residential apartments, townhouses, master planned land communities and mixed use projects. In each case, the combination of sophisticated environments and refined design aesthetics elevates projects to landmark status.

In collaborating with visionary architects, Goldfields has delivered precinct shaping projects to the market, revitalising under appreciated city pockets in the process and transforming them into desirable destinations where people want to live, work and play.



The Raleigh, Goldfields

ARCHITECTURE BY

make

Make is a different kind of architecture practice. Founded in 2004 by Ken Shuttleworth, they are motivated by a single purpose: to design the best places, spaces and buildings in the world.

Make is a team of 150 in London, Hong Kong and Sydney providing architecture, interior and urban design services from concept to completion.

The practice has completed over 100 built schemes around the world, from award winning workplaces of the future, to transformational urban design, world class hotels and luxury interiors, it has a wealth of cross-sector, global expertise.

Make's approach to sustainable design considers environmental, social and economic factors, including targeting 2030 net zero carbon. They aim to create a future that delivers social value for all.



The Atlas Building, Make Architects

1800 004 233 | THEBRYSON.COM.AU

Goldfields

make

Colliers

This document has been prepared by Goldfields and Colliers International for advertising and general information only. While care has been taken to ensure that all representations are accurate as at the date of publication, Goldfields and Colliers International does not guarantee, warrant or represent that the information contained in this document is correct. Any interested parties should undertake their own enquiries as to the accuracy of the information. To the extent permitted at law, Goldfields and Colliers International excludes unequivocally all inferred or implied terms, conditions and warranties arising out of this document and excludes any liability for loss and damage arising therefrom. Computer generated images are indicative only of the generally intended development. Any views depicted are indicative and for illustrative purposes only. Views and apartment outlooks will vary depending on the level and location of the unit. Not all units will have views. Views may be impacted by future development of adjacent properties. Prospective buyers should make their own enquiries in relation to views. Images are not to be relied on as a guarantee or representation that a prospective buyer will receive the view, development layout, specification and/or construction depicted here. The actual view, development layout, specification and construction may vary materially from the image depicted. Colliers and Goldfields reserve the right, without notice, to vary or amend the layout, specification or construction of the development without varying or amending the images. All purchases are subject to contract terms.

